

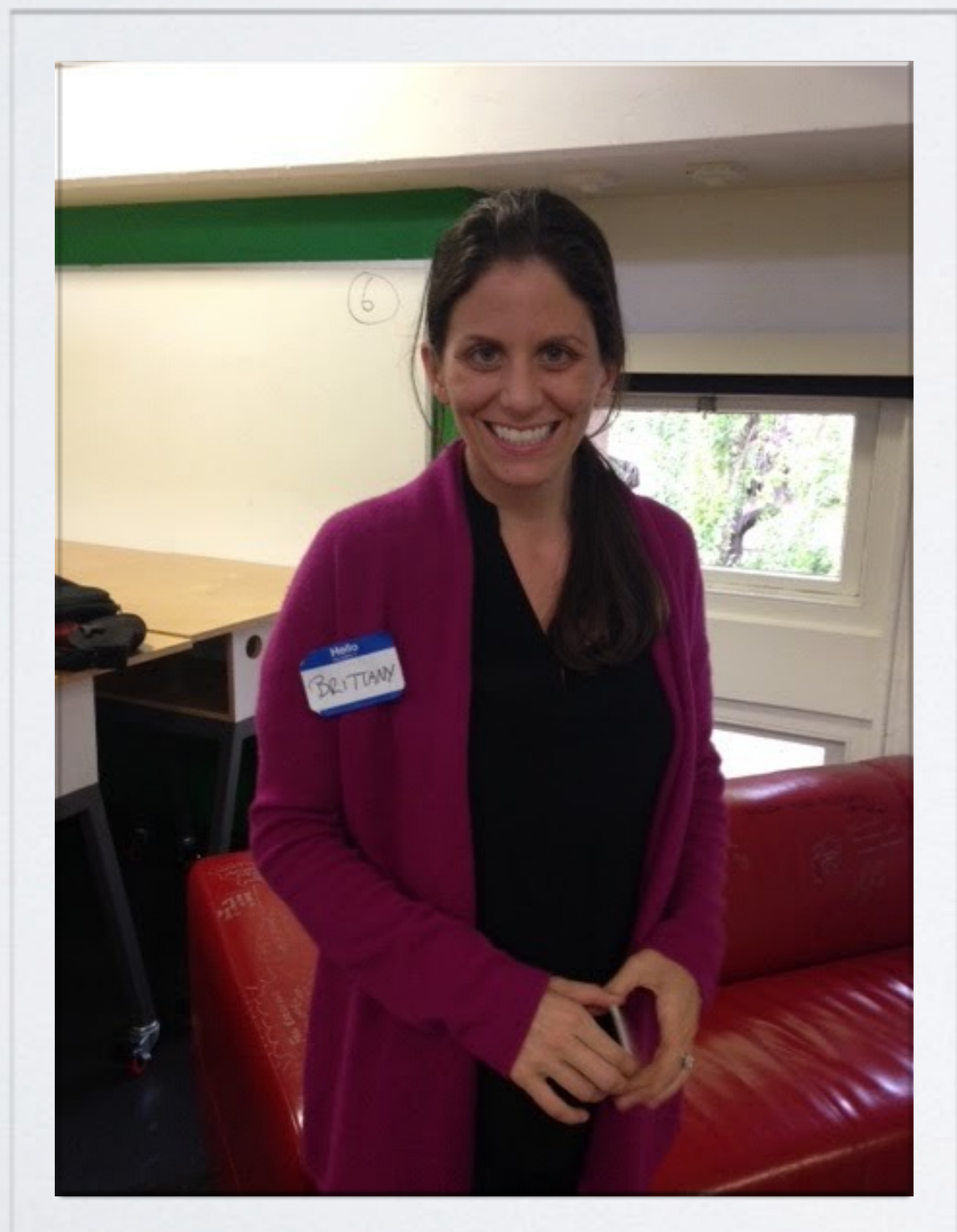


A place for families

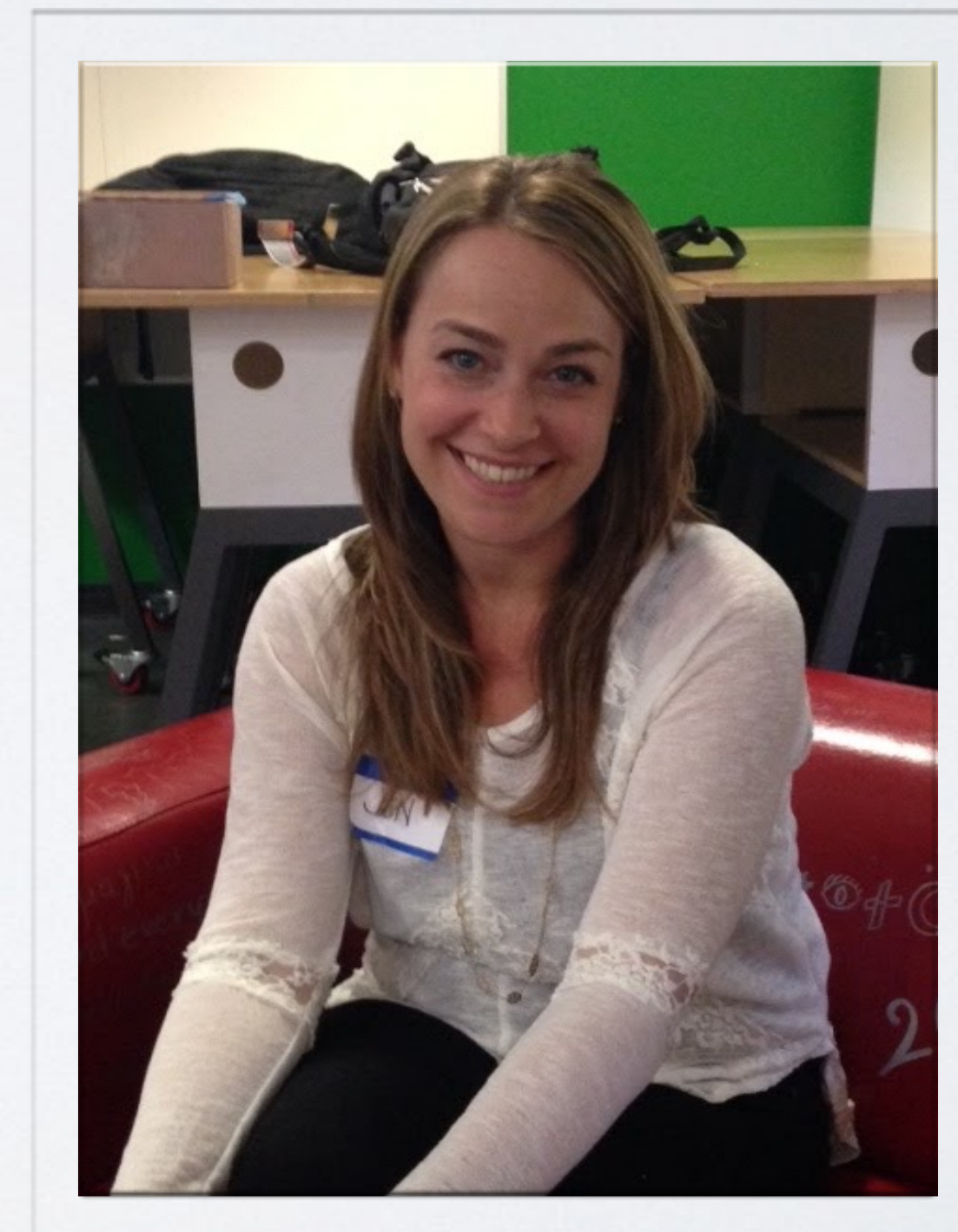
SAUL LOPEZ
MELISSA RUNSTEN
NEAL ULRICH

INSPIRATION

Brittany needs a better way to *escape* from the NICU because she feels *overwhelmed* by the lack of privacy.



Jen needs a *warm and inviting* space in the NICU because she feels *alienated and unwelcome* in the open bay environment.



HOW MIGHT WE

create an intimate space
for parents and baby
within an open bay?

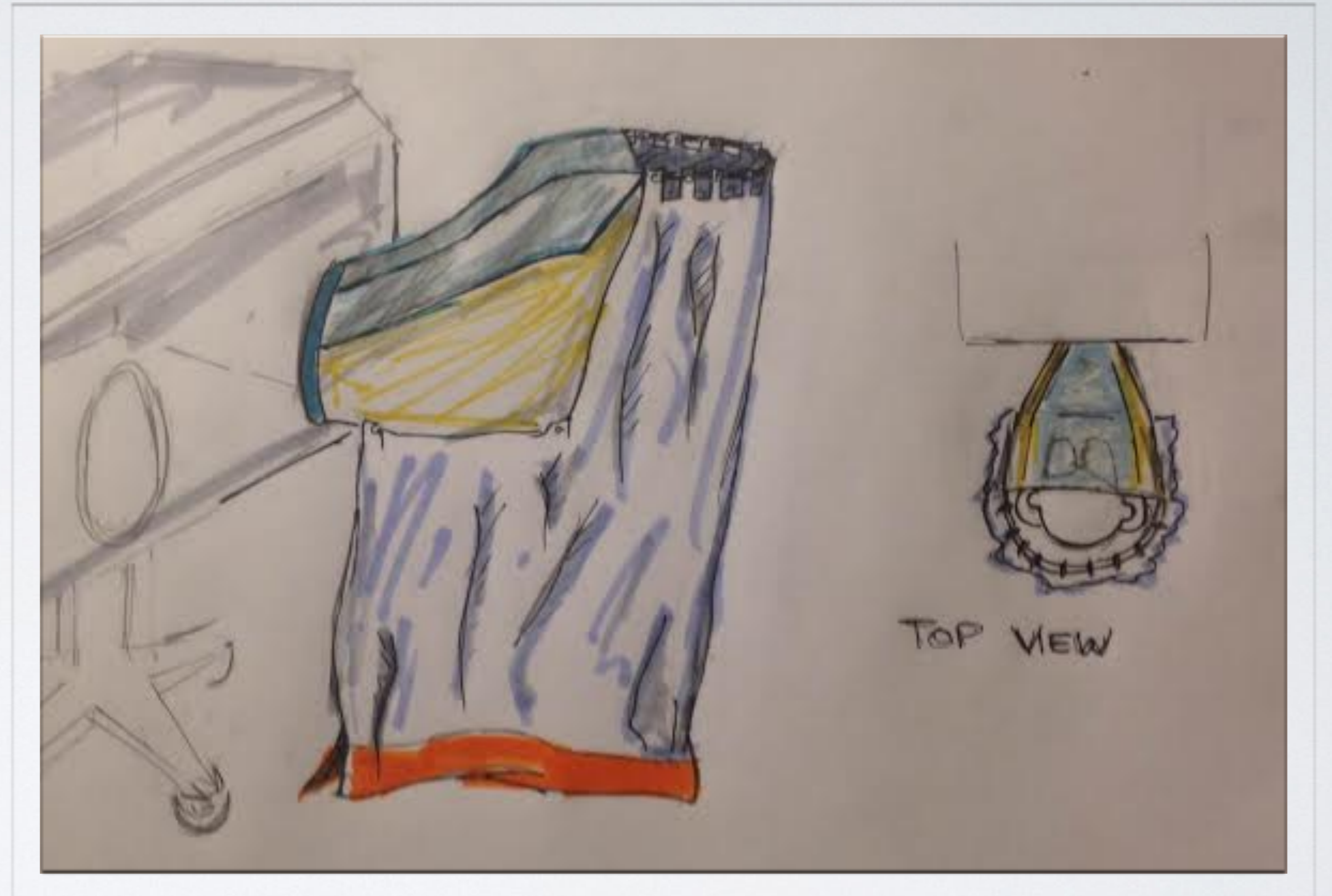
PORCHES

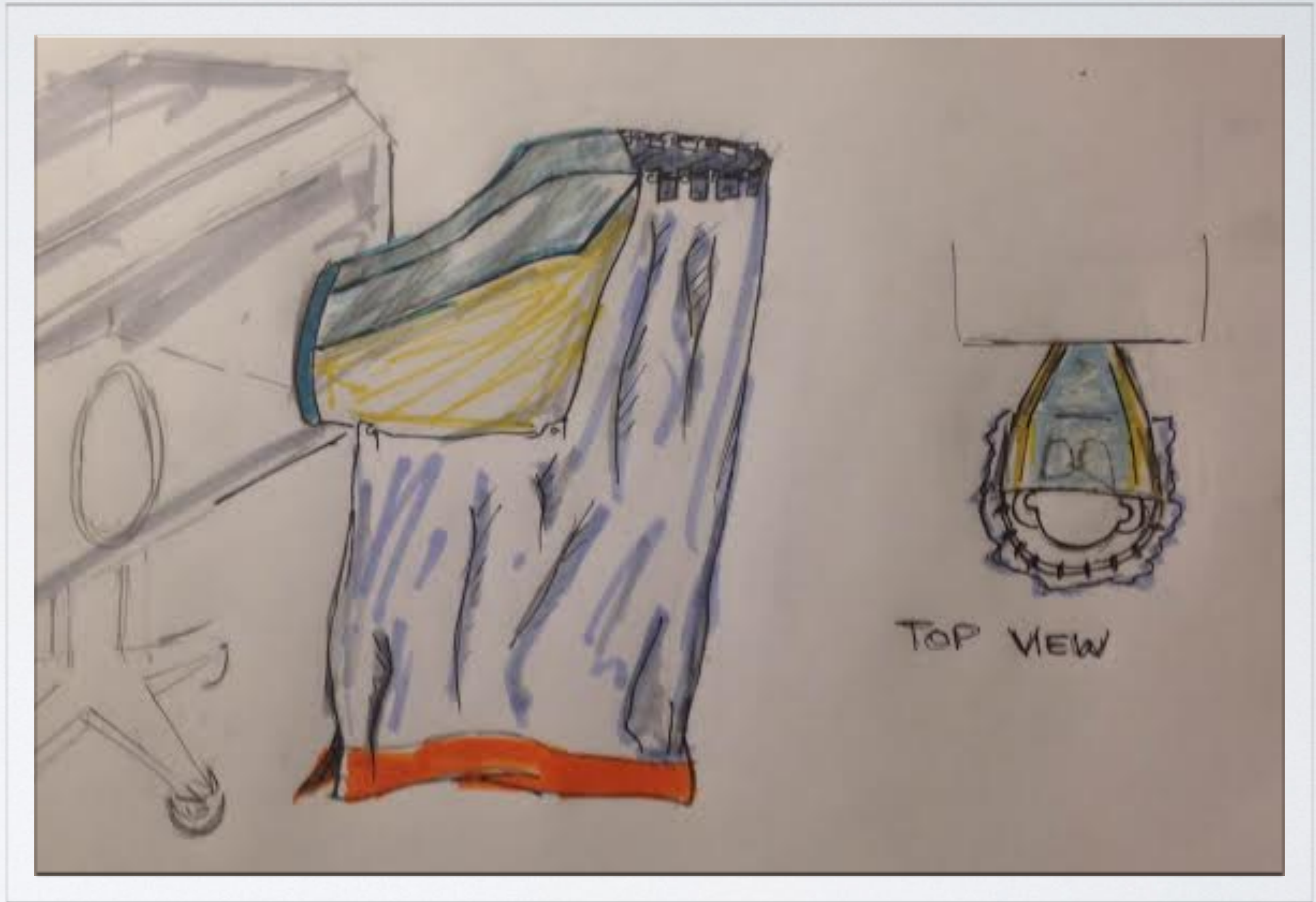
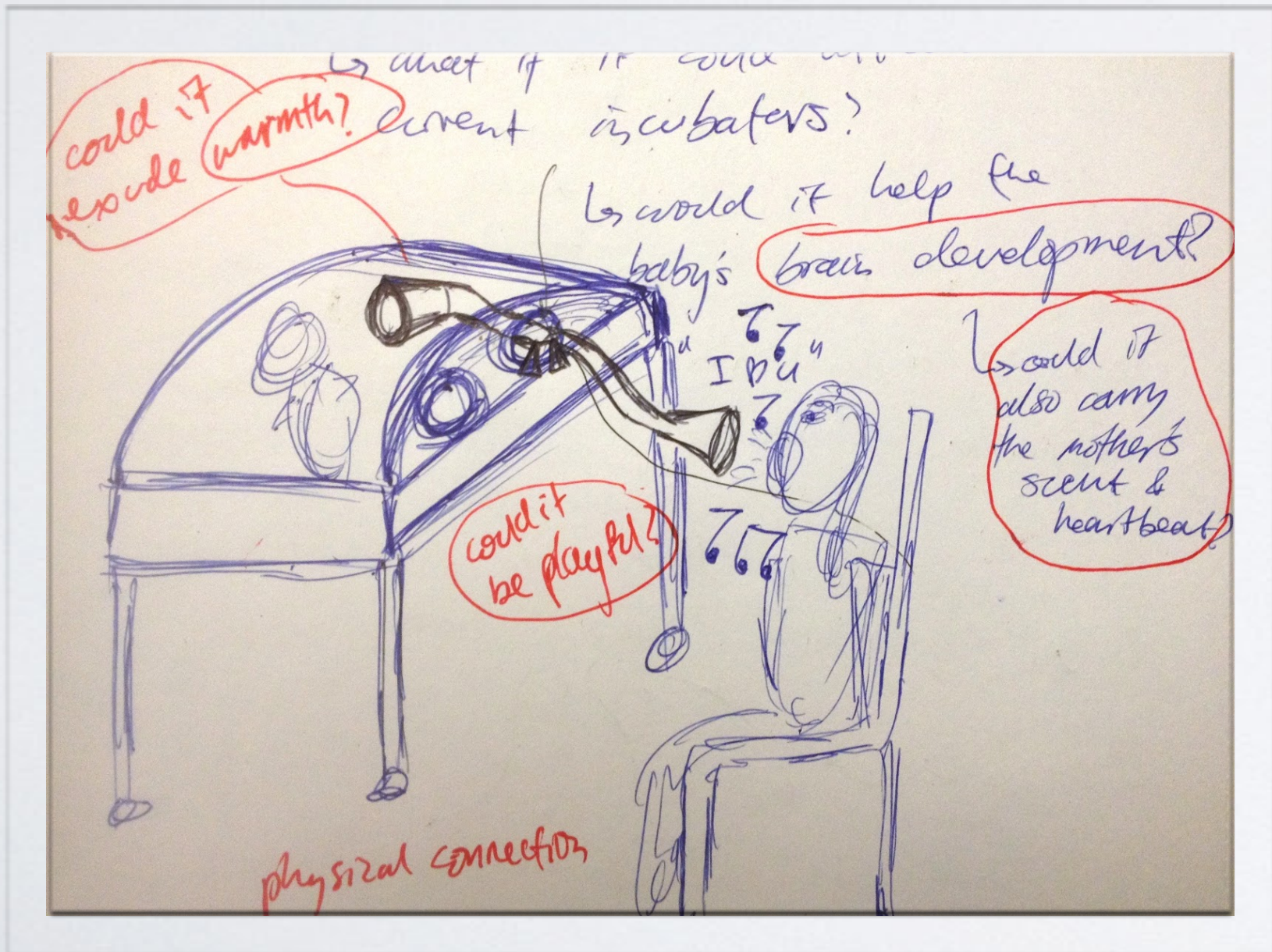
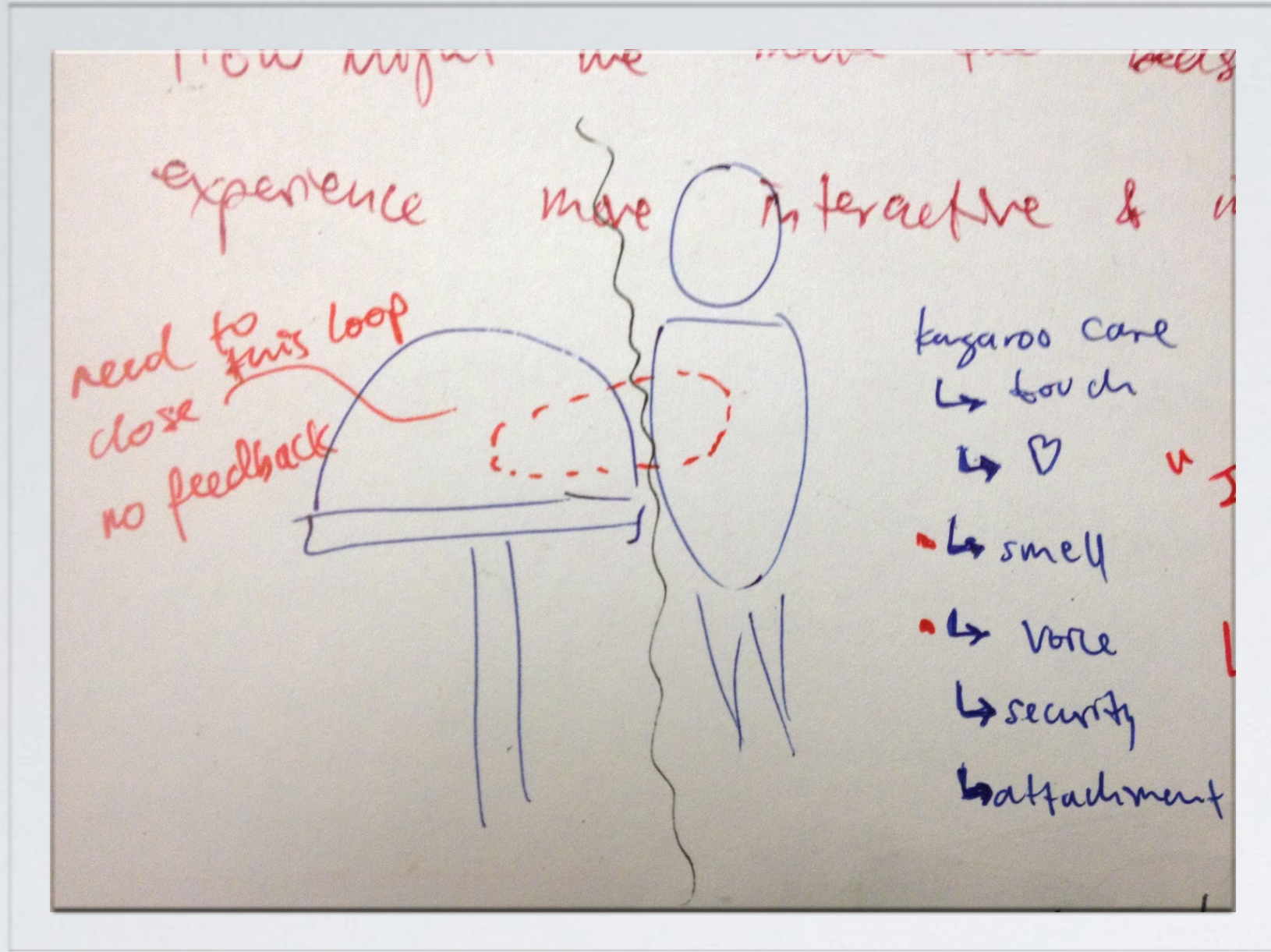
PROTOTYPE ONE



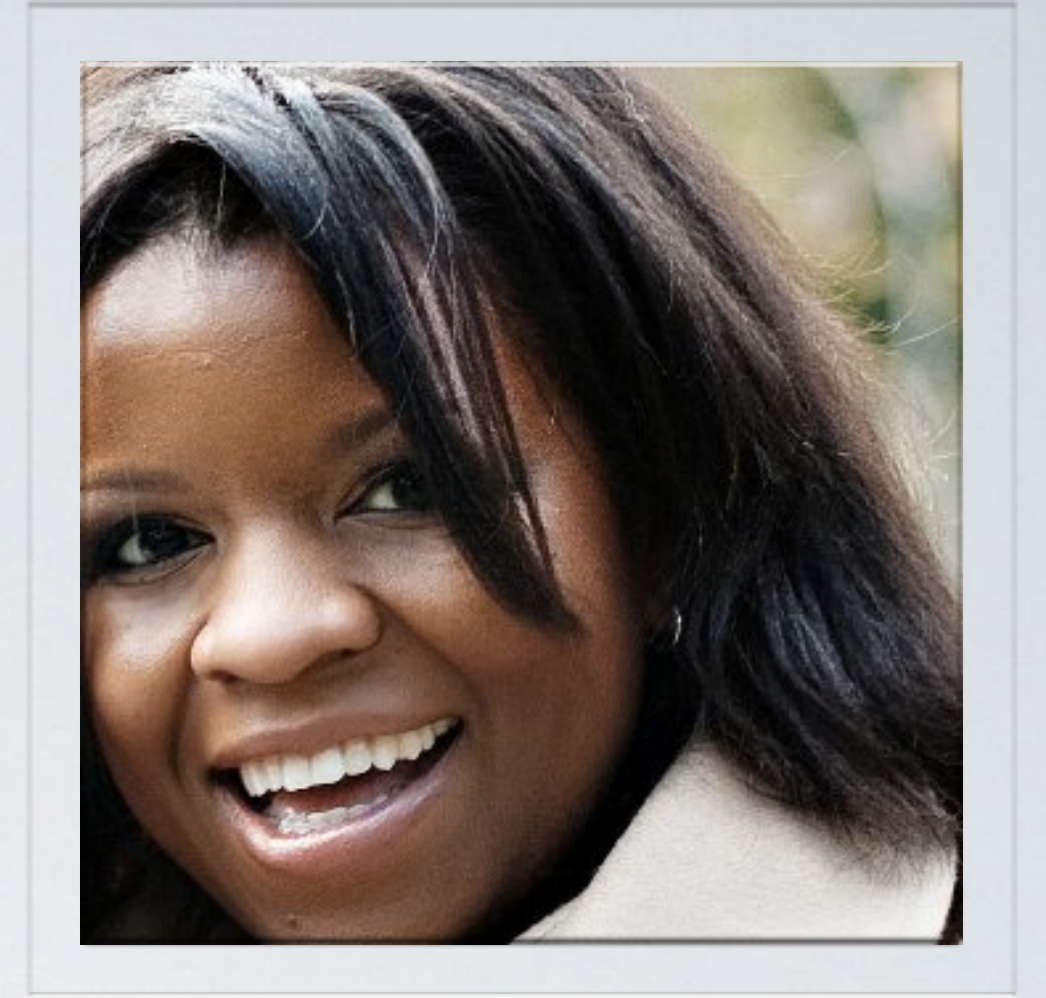
IGLUE

PROTOTYPE TWO



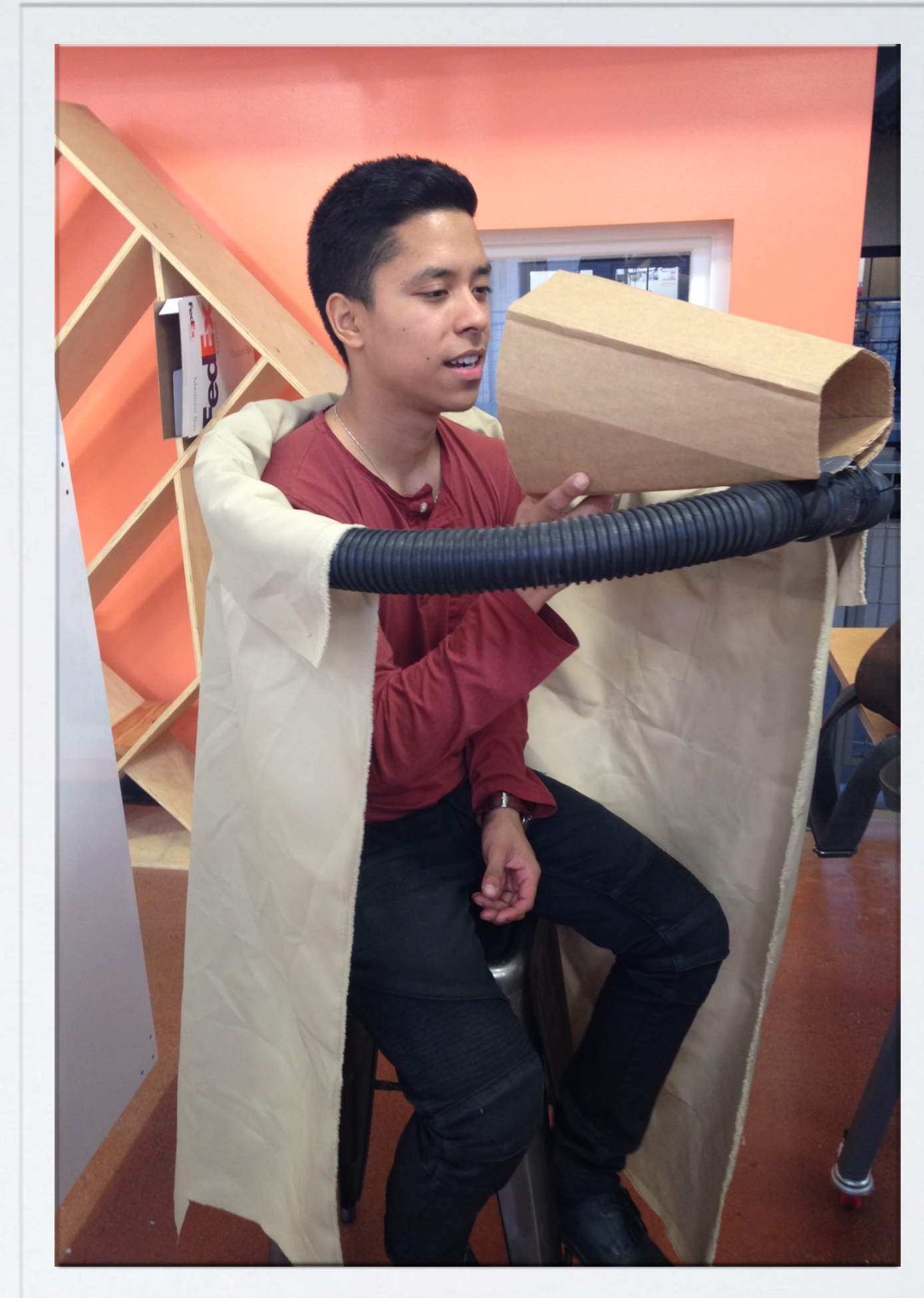
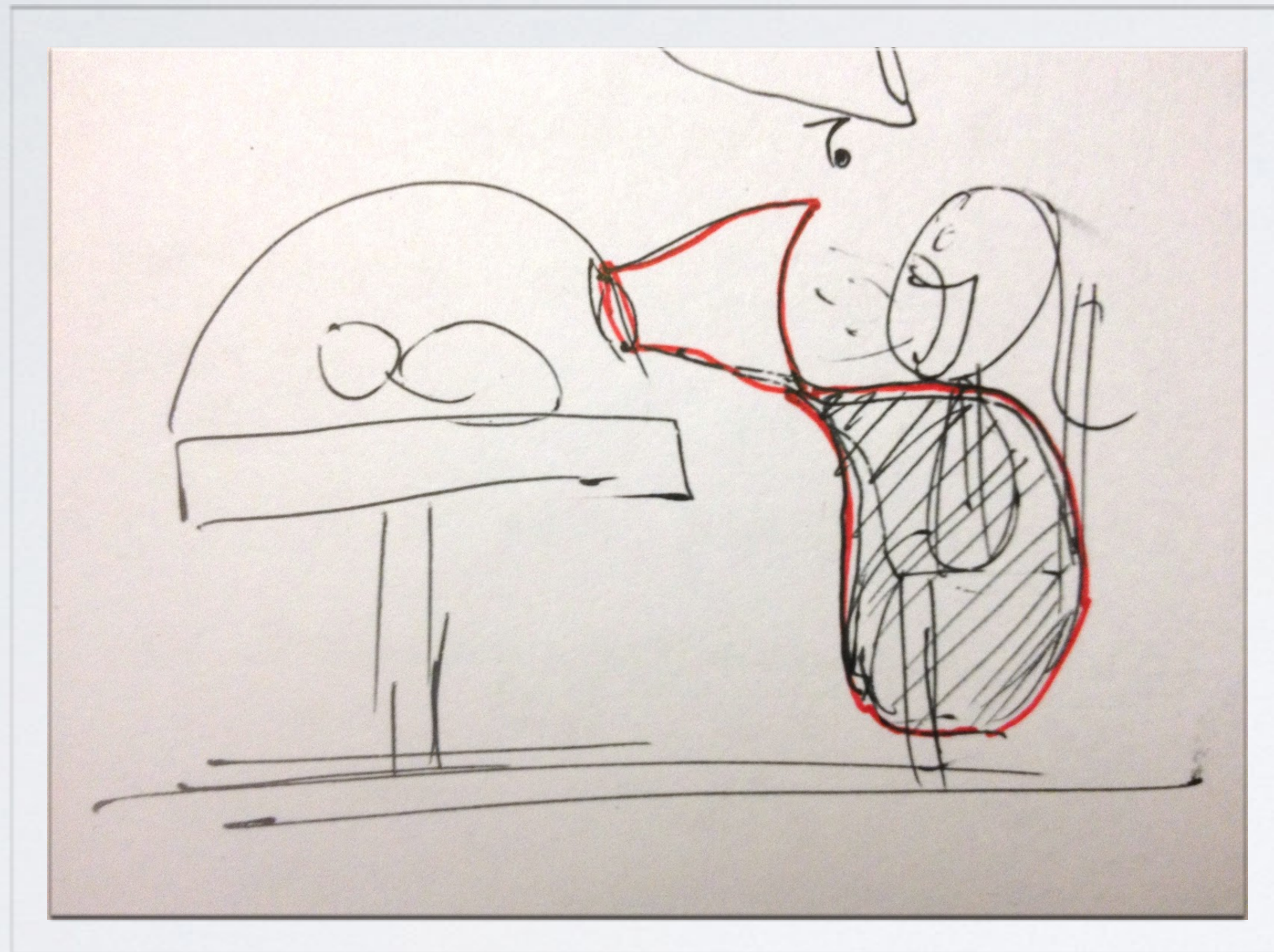


FEEDBACK: SEYI MCLELLAND



1. The design would be better with enough room for a couple. “It’s a very stressful time, and you need to support one another.”
2. Make sure the space is not claustrophobic. “I think people would be more comfortable with an open top.”
3. “I like the idea of [designing] space. Sometimes you just want to draw curtains around and be by yourself... alone just to deal and be with your baby.”

FEEDBACK: SEYI MCLELLAND



make space intimate & personal
 ↓
 Establish personal space
 ↓
 FR:

1. Block line of sight - 2 sides
 create walk → max 5' wide
 7' tall
2. Has to be storable 11' x 11' in NICU
 open bag
3. Deconstructable < 2 sec.

DP:

- 1) Laser beam wall
- 2) Antibacterial cloth screen on pole w/ tri-pod
- 3) Non-see through glasses
- 4) Pop-up tent
- 5) Waterfall
- 6) Smoke screen
- 7) Blinds
- 8) moving walls
- 9) giant tape measure
- 10) infinitely elastic
- 11) nylon/wire frame
- 12) dust cloud
- 13) Beads screen
- 14) mirror
- 15) clay
- 16) electric field substance
- 17) self-assembly structure
- 18) magnet sculpture
- 19) Chia-pet
- 20) beach mat
- 21) large animal wing

②

- 1) roll it up
- 2) flatten it
- 3) origami (fan)
- 4) configurable tense structure
- 5) disappear
- 6) shrink-ray
- 7) Lego (pieces)
- 8) Squeeze & tie
- 9) Ball thing (expanding)
- 10) Mash it
- 11) Kill it (smash it)
- 12) slip bracelet
- 13) spring loaded mech
- 14) In Portable

wide tall in NICU open bag < 2 sec.

pole w/ tri-pod

The sketches illustrate the design of a portable partition system. The top part shows a fan-like structure with a central pivot point and multiple segments. Below this, a rectangular frame is shown with a screen attached to it. A detailed view shows the screen being attached to a pole with a tripod base. The sketches are drawn in red and blue ink.

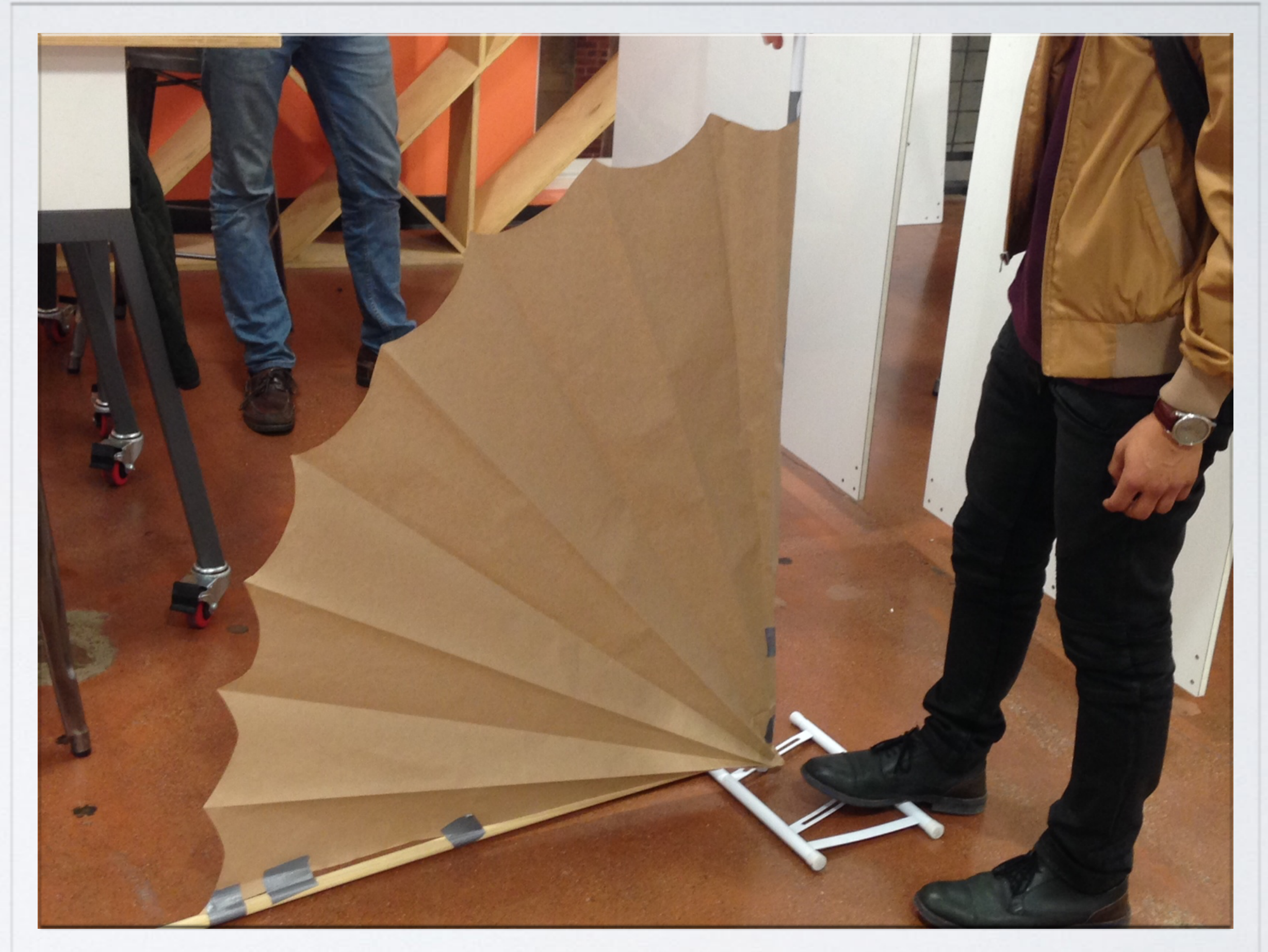
STORK WINGS

PROTOTYPE THREE

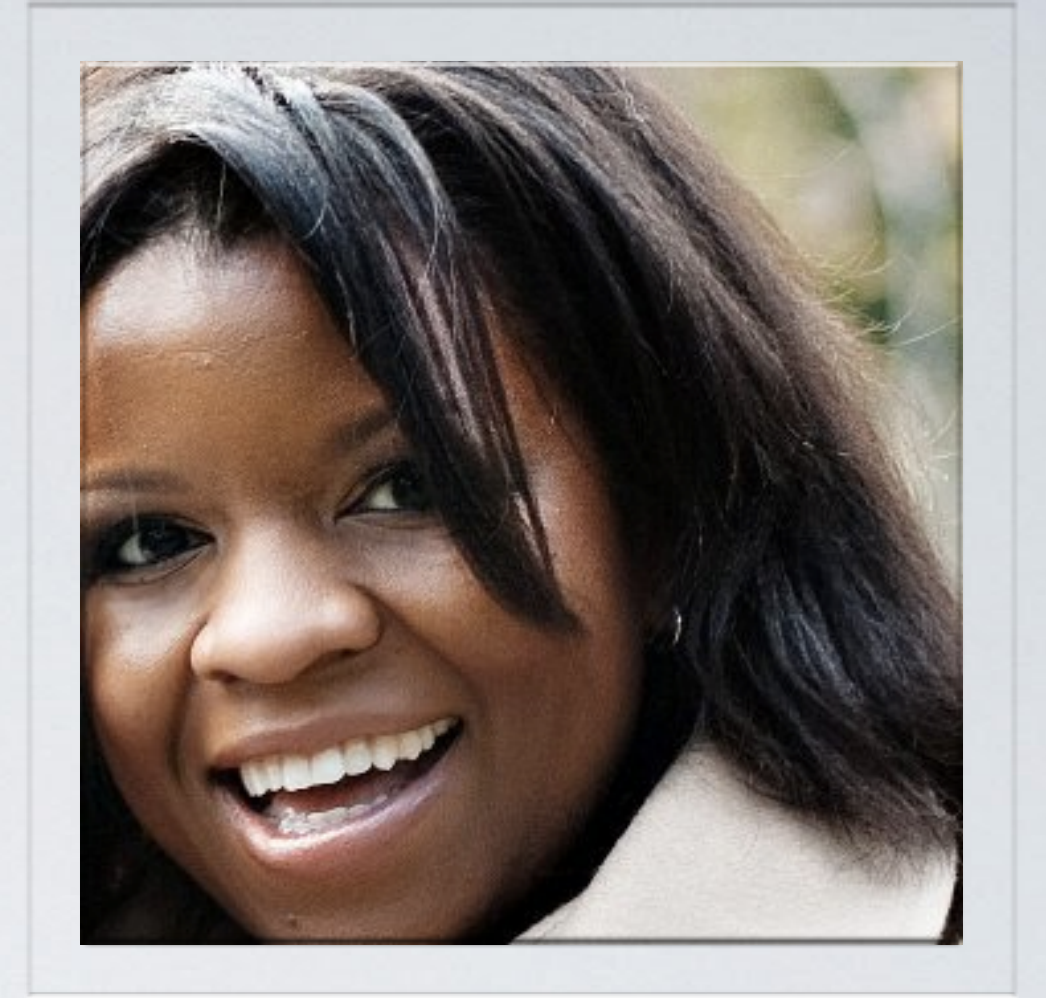


STORK WINGS

PROTOTYPE THREE



FEEDBACK: SEYI MCLELLAND

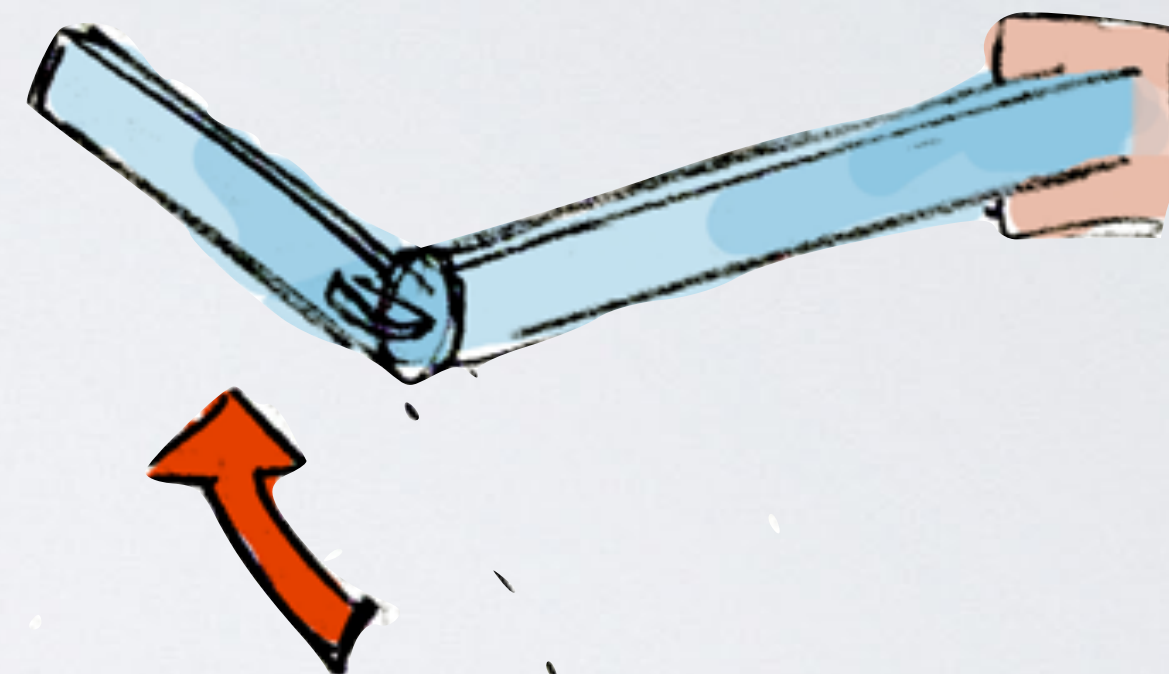
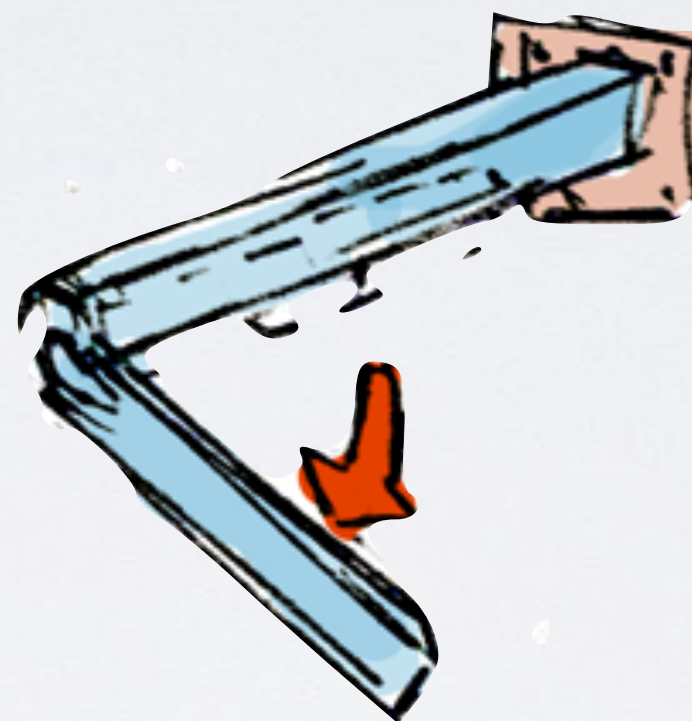
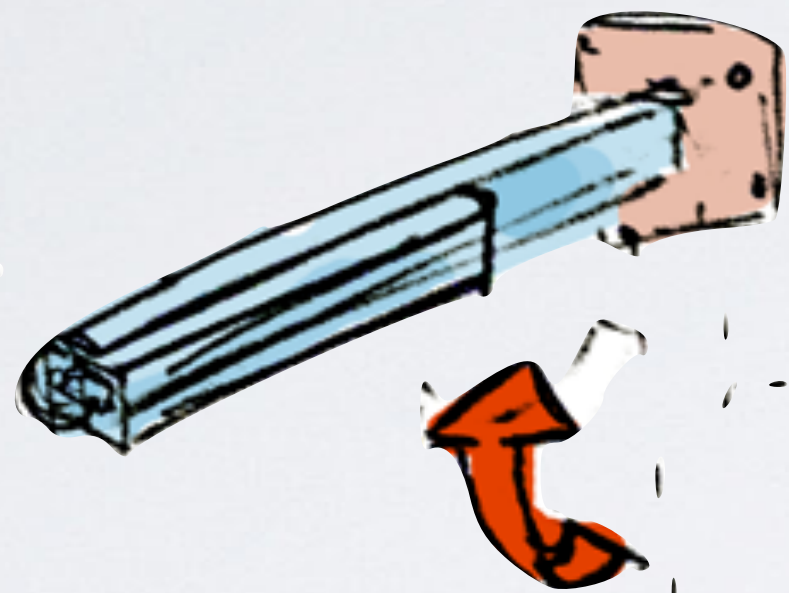


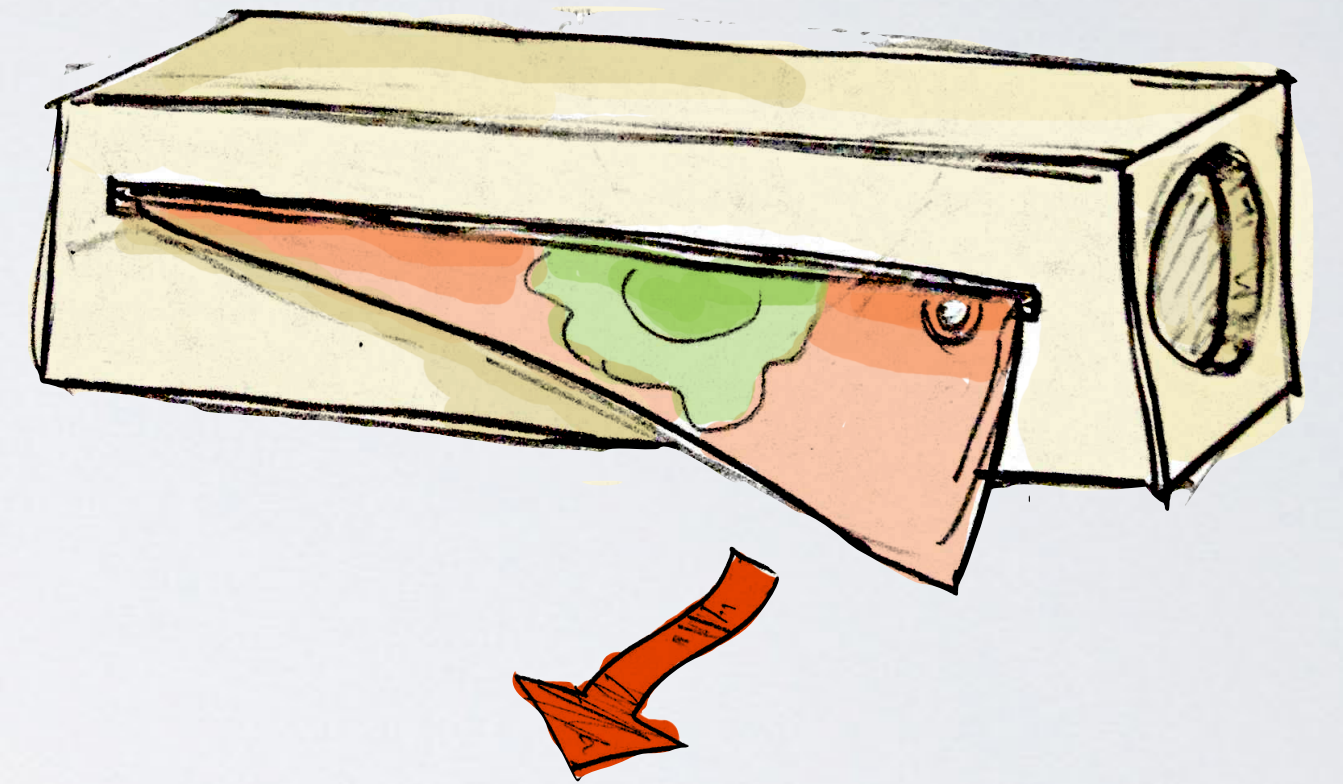
1. “Cleaning is a huge thing. Infection control is enormously important. You have to think about who’s going to put it in the wash and store it properly.”
2. “Can medical staff get in quickly if there’s an emergency?”
3. “Nurses need to see the child and monitors,” so the height and placement of things are important considerations.
4. Stork Wings should be available at each bedside. A few partition curtains are available in the step-down nursery, but “with seven mothers in a room, it becomes a battle.”

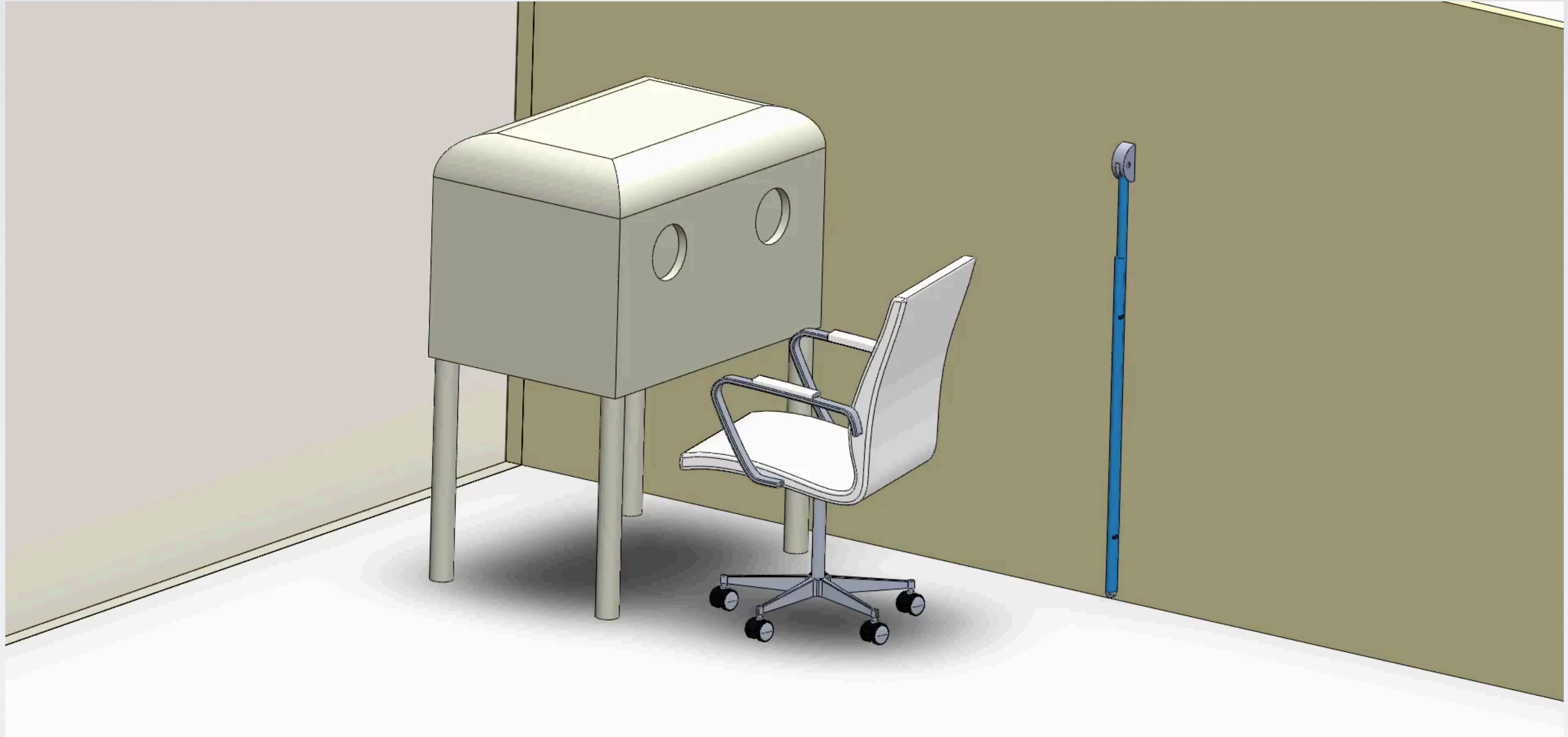


A place for families

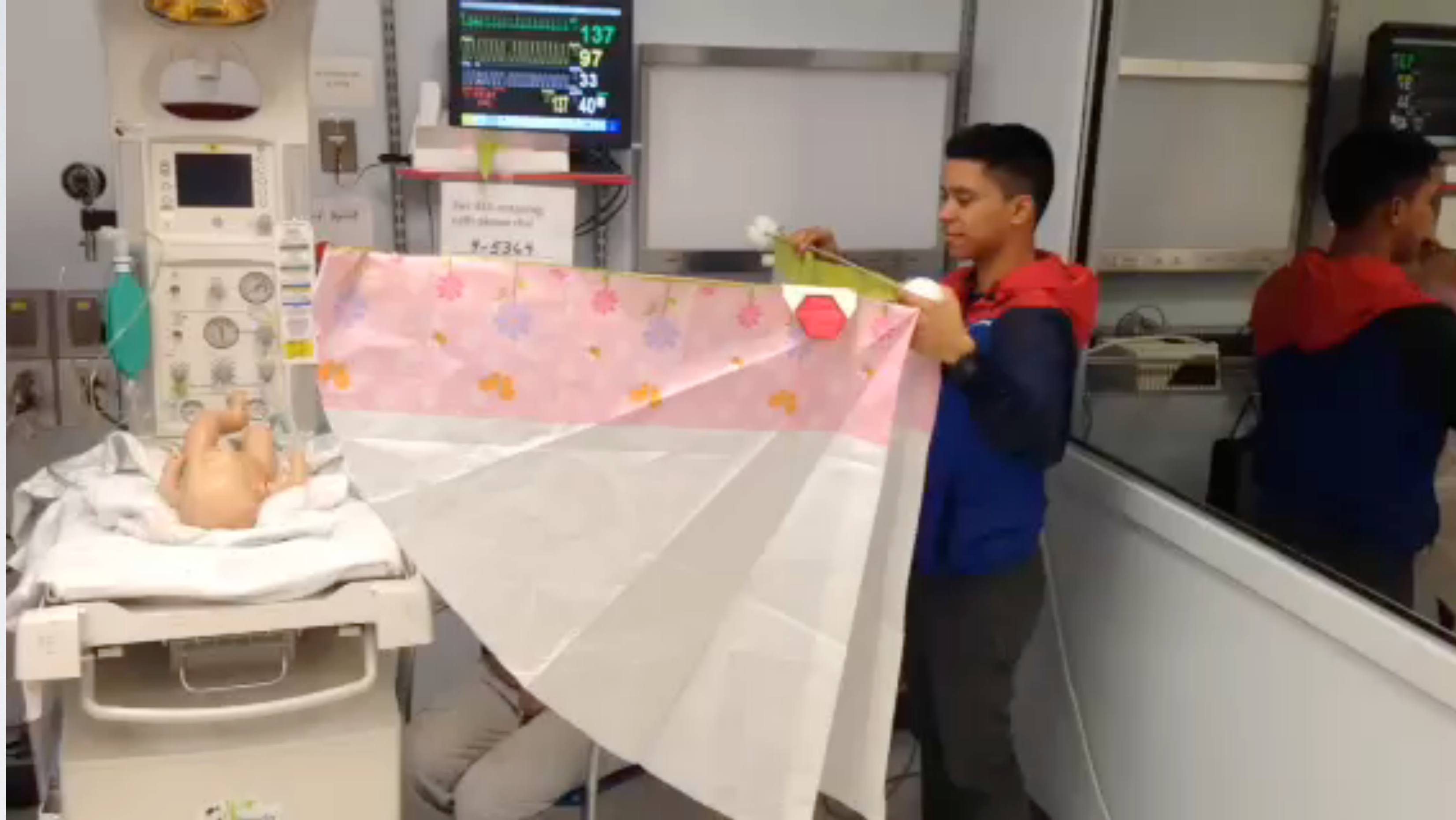












NEXT STEPS

1. Fan material, selection and storage
2. Joint mechanism design
3. Wall attachment
4. Customization opportunities
5. Continued testing and iteration

THANK YOU



Dr Bill Rhine



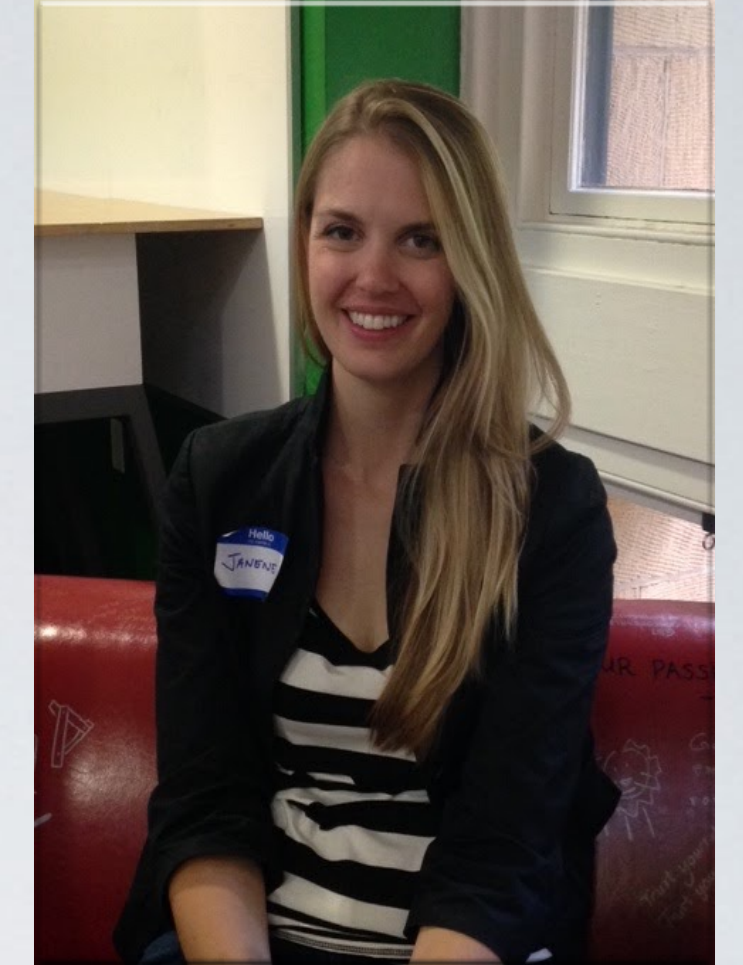
Jules Sherman



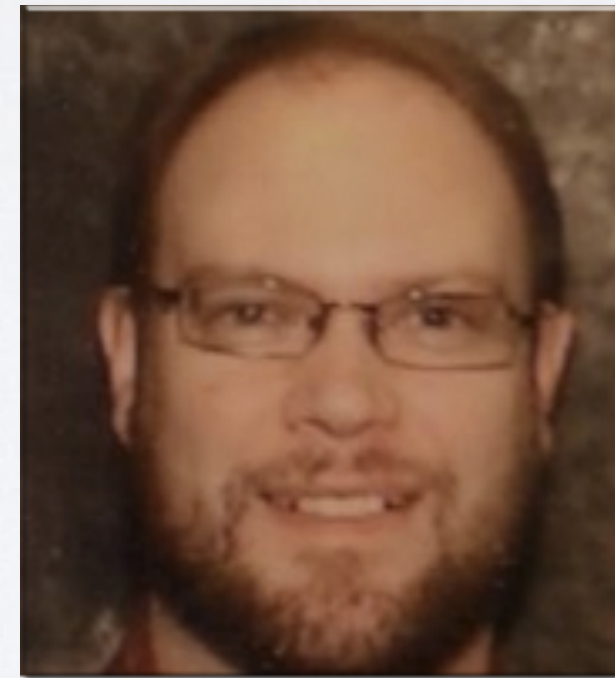
Seyi



Brittany



Janene



Michael



Jen



Madeline